

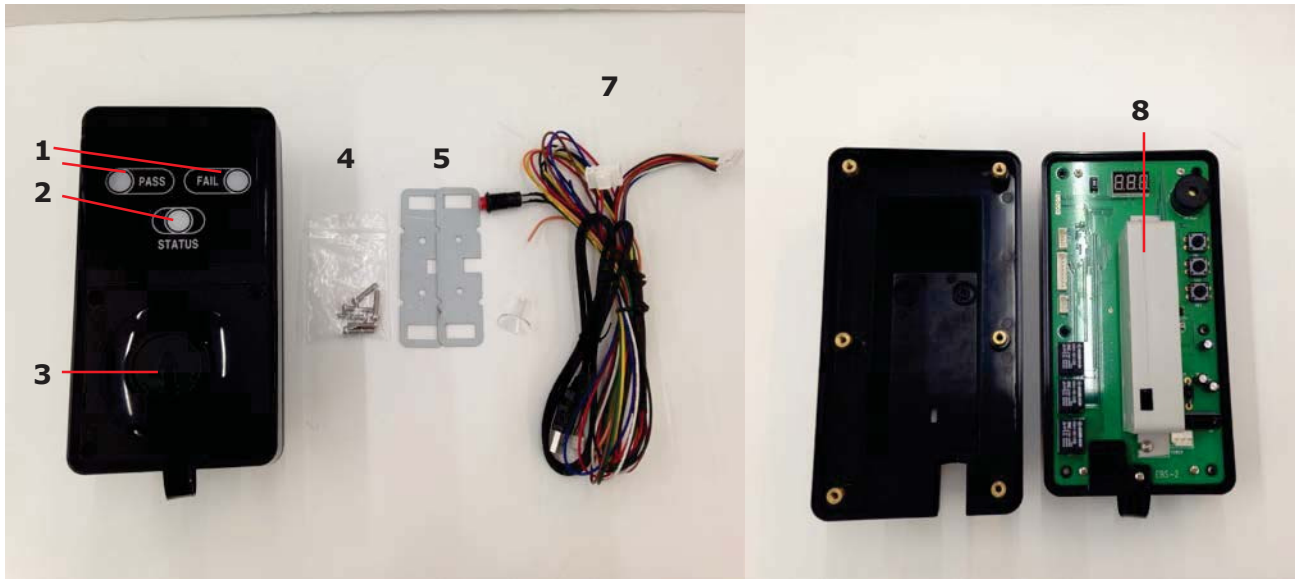
AlcoSense[®] AccessPoint Breathalyser

User Manual



The AlcoSense AccessPoint (Entrance Breathalyser System) is a fuel cell Breath Alcohol Tester that can be connected to an access control system. It can control the entry of workers into their workplace by simply checking their breath alcohol concentration. The AlcoSense AccessPoint breathalyser can be installed with turnstiles, auto door, speed gate or any other type of access control system.

Components



1 Test result lamp



2 Status lamp



3 Sampling hole and cover



4 Screws



Contents

1x Breathalyser

1x Connecting cable including power switch

6x Screws for assembling

1x Funnel for sampling hole

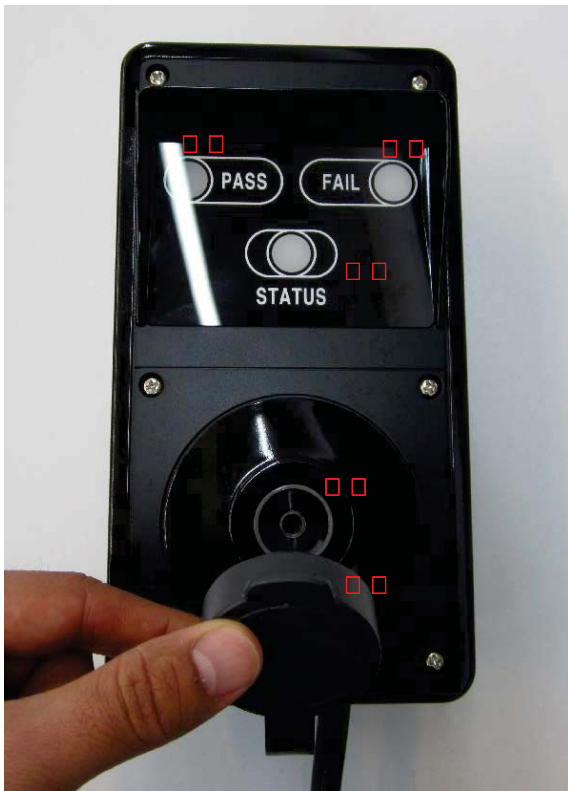
2x Brackets

1x Manual

[Sold separately]

USB cable & Software for PC connecting

Functional Description



- **Sampling hole**
 - This is where the user blows into the device.
- **Sampling hole cover**
 - Prevents sensor from being damaged by dust or pollutants in the air
- **STATUS Lamp**
 - Red LED flickering: Warming up
 - Green LED on: Ready
 - Orange LED on: Analyzing
 - Red LED on: Flow error
- **Test Result Lamp**
 - PASS: Green LED on
 - FAIL: Red LED on
 - PASS range can be set from 0.1‰ to 0.9‰.



- **Normal/PC mode switch**
 - Normal mode
 - PC mode: Device is controlled by PC (Optional)
- **FND display**
 - Displaying the warning and others
- **8 pin connector**
 - Power and signal
- **4 pin connector**
 - USB connector for connecting to PC
- **Replaceable fuel cell sensor module**
- **Function switches**
 - Set the function using these switches

Description of Cables and Connectors



PIN	PIN DESCRIPTION	WIRE
1	DOOR INPUT (OPEN/CLOSE)	WHITE
2	PASS OUT(+)	BLUE
3	FAIL OUT(+)	GREEN
4	POWER ON/OFF OUT (+/-)	YELLOW
5	READY OUT	ORANGE
6	END OF TEST OUT	BROWN
7		RED
8		BLACK

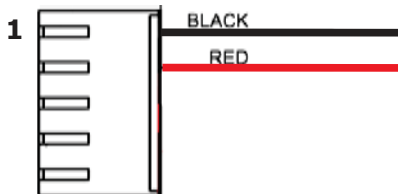
Pin 1: 12V detect door open, 0V detect door closed

Pin 2 and 3: 12V, 10am (max)

Pin 4: Power on 0V, Power off 12V

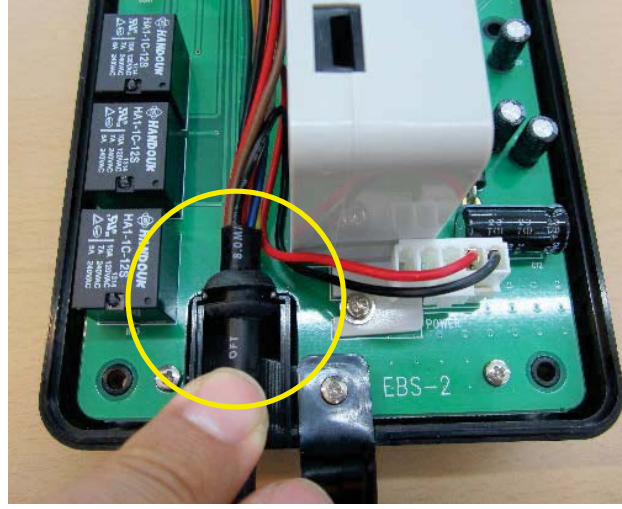
Pin 5: Normal 12V, Ready to test 0V

Pin 6: Normal 12V, End of test 0V

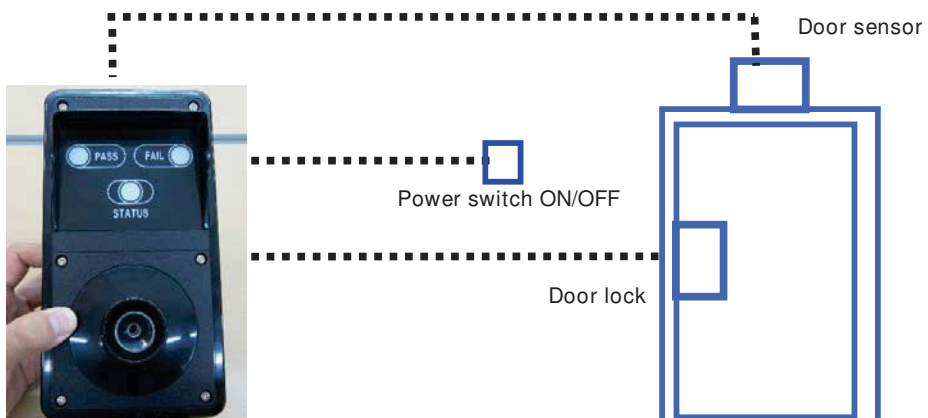


PIN	PIN DESCRIPTION	WIRE
1	POWER GND	BLACK
2	POWER +12V	RED

How to Assemble



Installation Reference



1. Connect the cables
2. Make sure sensor module is connected
3. Follow the diagram's positioning of cables
4. Assemble front & back with screws
5. Connect cable with auto door's sensor and lock

How to Use

1. Open the sampling hole cover of the AlcoSense AccessPoint
2. Make sure the STATUS light is green
3. Blow into the sampling hole
4. Depending on the test results, Pass or Fail lamp will blink

** If breath sample is not strong enough for an analysis, the STATUS light will turn red.*

How to Set Buzzer, Autopower & Pass Level



1. Switch off and open the device
2. Press "SW1" and "SW2" at the same time, hold them down four seconds and then release them. FND display will turn on and "bUZ" will be displayed.
3. If you push "SW1", you can see 3 kinds of setting modes.
 - 1) **bUZ**: Set the buzzer on or off
 - 2) **FrE**: Auto power ON (Fon) / OFF (Fof)
 - 3) **Lo**: Set the PASS level
4. Set the Functions
 - 1) Buzzer on/off
 - Press "SW2" until you can see "bUZ" on display.
 - You will see "bon". If you press "SW2" again you will see "bof".
 - "bon" means buzzer on and "bof" means buzzer off.



- 2) Auto power on/off
 - Press "SW2" until you can see "FrE" on display.

- You will see "Fon". If you press "SW2" again you will see "Fof".
- "Fon" means the device will not switch off automatically and "Fof" means the device will switch off automatically after 15 minutes of non-use.



3) Pass level (0.01 to 0.09%BAC)

- Press "SW2" until you can see "Lo" on display.
- You will see "LO.2". If you press "SW2" again you will see "LO.3", "LO.4" and etc.
- "LO.2" sets the high level to 0.02%BAC.
- This level can be set from 0.01 (LO.1) ~ 0.09 (LO.9) %BAC.
- 0.01 ~ 0.09 %BAC is equivalent to 0.10 ~ 0.90 g/L and 0.05 ~ 0.45 mg/L

5. Push "SW1" and "SW2" at the same time to save your settings.



How to Check the Number of Tests

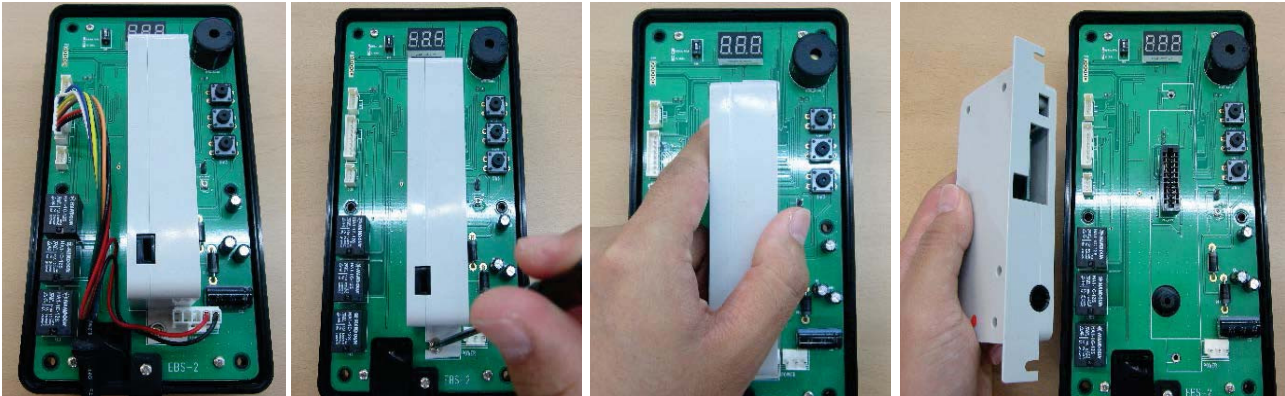


Switch off the device and then press "SW1" for a moment.

The number on the display indicates the number of tests conducted on the device:

000	Less than 10 tests
001	Above 10 tests
010	Above 100 tests
100	Above 1000 tests
999	Above 9990 tests

How to Replace Sensors



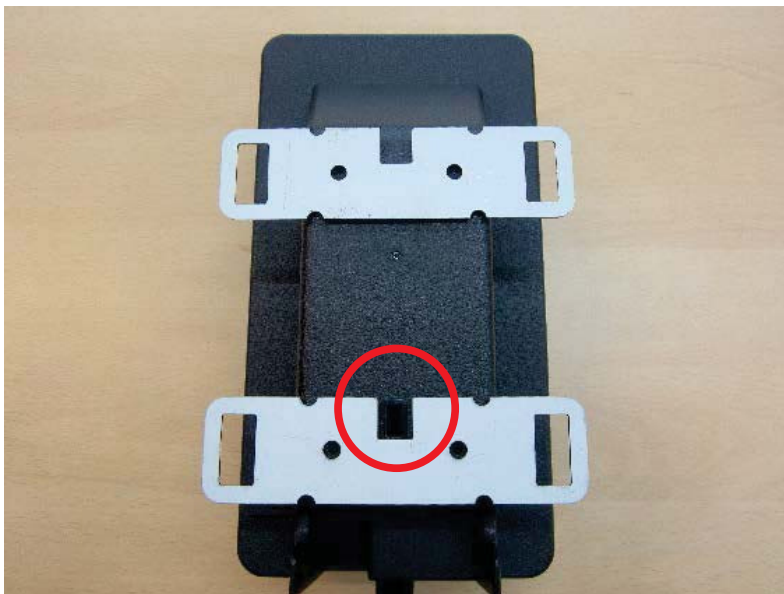
You should only replace the sensor with that provided by the manufacturer. Before replacing the sensor, turn the power off before unscrewing the top and bottom, then replace with the new sensor.

CAUTION!

Before replacing sensor module, unplug the power cable. Not doing so may damage the sensor module.

Bracket Placement

Please make sure that the brackets are positioned like the picture below:



Troubleshooting

1. The AlcoSense AccessPoint cannot power on

- Reason: Power supply is not connected correctly
- Solution: Check that the red cable voltage is 12V.

If problem still persists, please contact the manufacturer.

2. Red Status lamp

- Reason: Breath sampling is not strong enough for a breath analysis (Flow error)
- Solution: Wait until the Status lamp is green, then blow steadily into the sampling hole.

3. All 3 lamps (Status, Pass and Fail lamps) keep blinking

- Reason: White cable is connected to the door sensor or door is not closed properly
- Solution: Check the door sensor and whether the door is opened or closed

4. Analyzing and showing result is very slow, or no result provided after breath sample:

- Reason: The AccessPoint sensor module needs calibration or replacing. If the unit is not providing a result, the flow sensor in the sensor module may be damaged.
- Solution: Please contact the manufacturer.

Specifications

Indication of B.A.C.	Test result indicated by LED display PASS : Indicate Green Lamp FAIL : Indicate Red Lamp (Level for PASS can be adjusted)
Accuracy	±10% at 0.500 g/L
Sensor	Replaceable fuel cell sensor
Mouthpiece	Not required
Power supply	DC12V 1.5A
Power requirements	Minimum 12V DC 1amp (Amp requirement varies with connected components)
Warm up time	3 seconds ~ 4 minutes
Response time	Within 3 seconds at 0.000 g/L Within 10 seconds at 1.000 g/L
Calibration interval	Recommended 12 months or 1,000 tests
Ambient conditions	Storage: 0 to 50°C / Operation: 5 to 40°C
Dimensions	206 (height) × 108 (width) × 37 (thickness) mm
Weight	674g

Warranty Details

It is our aim to provide you with quality products that you can trust. Our products come with guarantees that cannot be excluded under the Australian Consumer Law. You are entitled to a replacement or a refund for a major failure and for compensation for any other reasonably foreseeable loss or damage.

You are also entitled to have the goods repaired or replaced if the goods fail to be of acceptable quality and the failure does not amount to a major failure.

The Guarantee

The product is guaranteed to be free from defects in workmanship and parts for a period of 1 year from the date of purchase. Defects that occur within this warranty period, under normal use and care, will be repaired, replaced or refunded at our discretion, solely at our option with no charge for parts and labour. The benefits conferred by this warranty are in addition to all rights and remedies in respect of the product that the consumer has under the Trade Practices Act and similar state laws.

Proof of Purchase

This warranty is valid for the original purchase and is not transferable. Please keep your purchase docket or receipt as proof of purchase and as proof of date on which the purchase was made. The purchase docket (or a copy) or receipt must be presented with the warranty when making a claim under this warranty.

Service during the Warranty Period

To claim for warranty, contact us on 1300 800 200 or info@andatech.com.au to get an RA# (Return Authorisation Number). Ensure that the RA# is clearly stated on the outside of the packaging and that the product is properly packaged so that no damage occurs to the product during transit. Shipping of the product back to us for warranty will be at your cost. A product return without the RA# or proof of purchase will not be accepted.

Extent of Warranty

This warranty is limited to defects in workmanship or parts. All defective products or parts will be repaired or replaced. This warranty does not cover manuals and packaging.

Normal Wear and Tear

This warranty does not cover normal wear and tear to the product or parts.

Exclusions

This warranty does not cover:

- Calibration costs.
- Any defect caused by an accident, misuse, abuse, improper operation, lack of reasonable care, unauthorised modification, loss of parts, tampering or attempted repair by a person not authorised by the distributor.
- Any product that has been damaged by a lightning strike either directly or indirectly or a main power surge or liquid ingress.
- The product if it is located outside of Australia.
- Any damage caused by improper power input or improper cable connection.

Disclaimers

1. This product must be used strictly in accordance with the instructions in this manual.
2. This product is intended to provide the user with an indication of alcohol on the breath. However, neither the manufacturer nor the supplier gives any warranty (express or implied) that the product can give any indication of blood alcohol level.
3. A person's BAC (Blood Alcohol Concentration) can only be accurately measured by the administration of a blood test. This product only measures breath alcohol content which, in turn, only gives an approximate indication of blood alcohol concentration.
4. In these circumstances the user of this product should not rely on the information provided thereby as an accurate indication of his blood alcohol concentration or of his level of intoxication or of his fitness to drive and in particular should not take any action in reliance on such information as the product can provide no more than an indication of alcohol on the breath.
5. If the user of this product makes any decision or takes any action based on the use of the product such decision or such action shall be at the sole risk of the user and neither the manufacturer nor the supplier assumes any responsibility for such decision or action. In particular, neither the manufacturer nor the supplier shall be in any way liable if the user of the product asserts that the product led them to believe that they were fit to operate a motor vehicle and were subsequently found not to be so fit.

Recalibration & Service

The AlcoSense® AccessPoint uses a fuel cell sensor to measure blood alcohol levels.

The manufacturer recommends this is done every 12 months.

For recalibration and technical support, please contact Andatech:

Phone: 1300 800 200 or 03 8899 6900

Email: support@andatech.com.au